



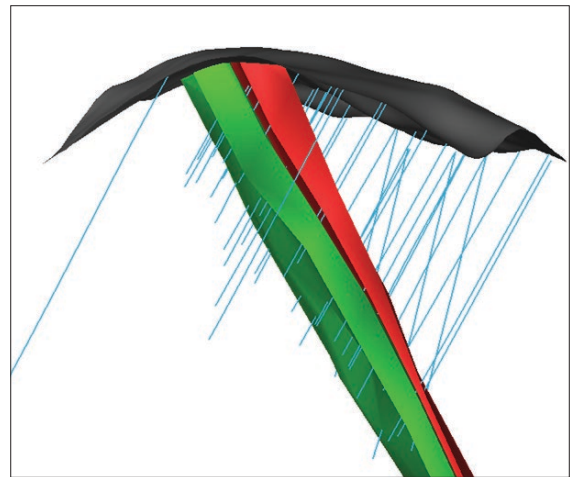
Specialist Consultants to the Mining Industry

## MINERAL RESOURCES

The MSA Group (MSA), Africa's leading mineral exploration consultant, has entrenched itself as a trusted and holistic service provider and contractor for over 30 years. MSA's track record is synonymous with quality, technical integrity and safety compliance.

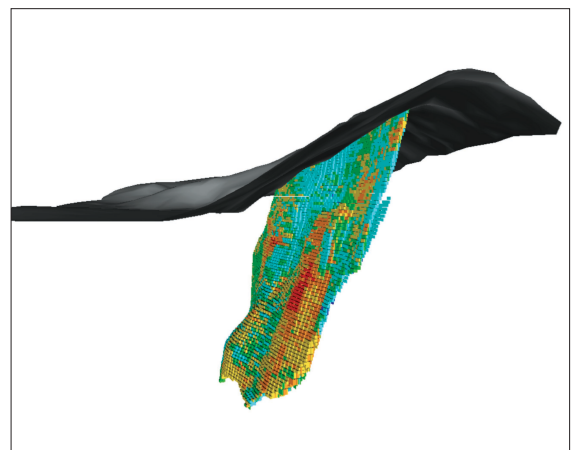
MSA provides specialist services on numerous international and local projects covering all commodities. Its client base includes the largest multi-national mining companies, private equity and sovereign wealth funds, governments and juniors listed throughout the world. MSA has worked on five continents and in over forty countries.

MSA's services encompass **Exploration and Geology, Mining Studies and Environmental Consulting**. These range from targeting and initial assessment to turn-key exploration and project management of multidisciplinary programmes culminating in geological and Mineral Resource modelling, Mineral Resource estimations, public reporting to all of the major stock exchanges, project valuations, due diligence studies and scoping to feasibility study management.



## CLIENTS

The MSA Group has conducted Mineral Resource work for a large number of clients from major mining companies to junior miners and explorers. Some of our more recent clients include African Nickel Ltd., Alphamin Resources, BCL Ltd., Bushveld Minerals, CEI Africa, China Minmetals, Cronimet, Elemental Minerals, Exxaro, Frontier Rare Earths, Intrepid Mines Limited, Ironveld Plc, Ivanhoe Mines, Kamoto Copper Company, Lesego Platinum, Lonmin Platinum, Mkango Resources, MMG Ltd., Nimini Holdings, Plinian Capital, Royal Bafokeng Platinum, Shanduka Resources, Syrah Resources, Taurus Gold, The Pangea Group, Veremo Minerals and West African Minerals.

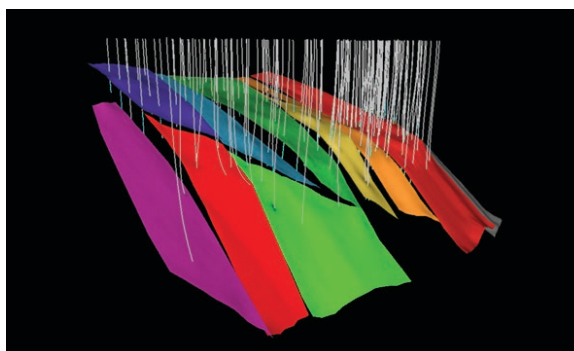


MSA's Mineral Resource estimation expertise covers a wide range of commodities including gold, iron ore, platinum group elements, chrome, nickel, copper, tin, zinc, lead, uranium, rare earth elements, coal, diamonds and a number of industrial minerals such as graphite, limestone and aggregates.

MSA's Mineral Resource service offering includes, Mineral Resource estimation, advice on Mineral Resource definition programmes, drilling and sampling optimisation, as well as Mineral Resource audits, reviews and due diligence exercises.

MSA carries out Mineral Resource work using international industry best practice principles and reports in accordance with major international reporting codes such as SAMREC, JORC and NI 43-101.

Our dedicated team of Mineral Resource consultants have a wealth of experience gained from a number of major mining companies and international consultancies. The consultants individually have between ten and thirty years hands-on experience in Mineral Resources, Exploration and Production Geology in a wide range of commodities.



**Jeremy Witley - Principal Mineral Resource Consultant. Pr. Sci. Nat., FGSSA.**

Jeremy's experience in the Mining Industry covers a period of more than 25 years. He has extensive experience in Precious and Base Metals in a wide variety of mineralisation styles. Jeremy has previously held a number of positions with various companies such as Anglo American Corporation, Rand Mines, Gold Fields, BCL Ltd, Snowden Mining Industry Consultants and Lonmin.

**Anton Geldenhuys - Senior Mineral Resource Consultant. Pr. Sci. Nat., MGSSA.**

Anton has been working in the Mining Industry since 2001. Prior to MSA he has held a number of positions with companies such as Anglo American Plc., MinRed (Anglo American's internal Mineral Resource advisory service), Anglo American Platinum and Harmony Gold Mining Company Ltd.

**Ruwayne Jooste - Senior Mineral Resource Consultant. Pr. Sci. Nat., MGSSA.**

Ruwayne has been working in the Mining Industry since 2001. He started his career as a Mine Geologist with Impala Platinum following which he worked as an Exploration Geologist in the Bushveld Complex. Before joining MSA, Ruwayne spent 10 years with MinRed (Anglo American's internal Mineral Resource advisory service).

In addition to our core team, we draw upon a number of associate consultants each with extensive specialist knowledge in their field.

**MSA Johannesburg**

Tel: +27 (0)11 880 4209

Email: [info@msagroupservices.com](mailto:info@msagroupservices.com)

Henley House, Greenacres Office Park:

Cnr Victory and Rustenburg Roads, Victory Park, 2195

PO Box 81356, Parkhurst, 2120, South Africa

ISO 9001:2008 Certified.

OHSAS 18001 Certified.

The MSA Group is a Level 6 BBBEE Contributor.

[www.msagroupservices.com](http://www.msagroupservices.com)